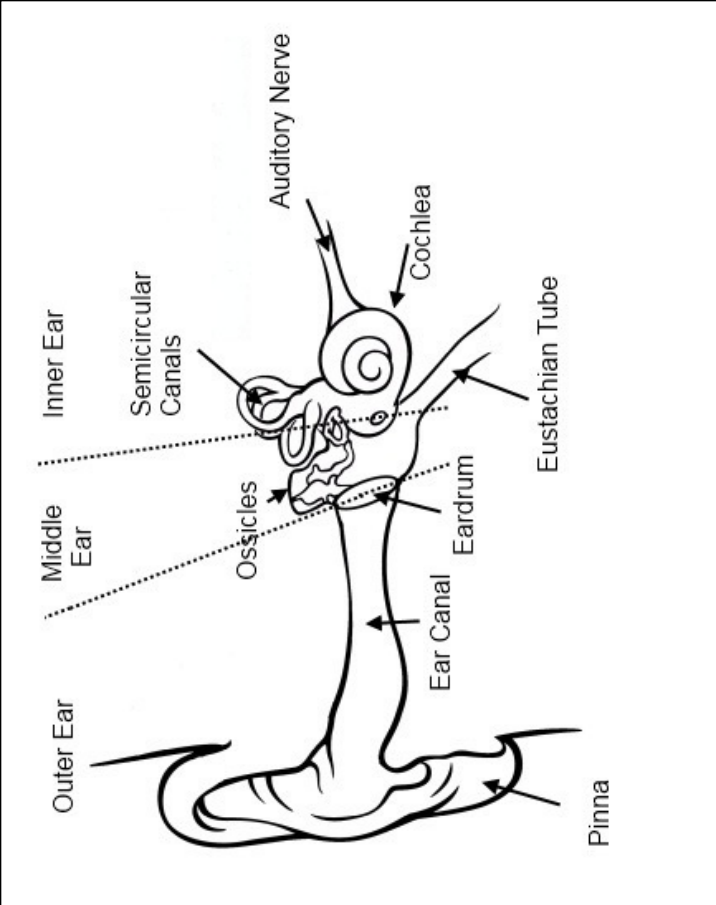


1. What makes a sound have a higher or lower pitch?
2. What makes a sound louder?
3. What is loudness measured in?
4. What is the lowest frequency humans can typically hear?
5. What is the highest frequency humans can typically hear?
6. Name a being on the planet that hears higher frequencies than we do.
7. Name a being on the planet that hears lower frequencies than we do.

SAY WHAT EACH PART DOES:

1. Pinna
2. Ear Canal
3. Eardrum
4. Ossicles
5. Cochlea
6. Auditory Nerve
7. Eustachian Tube
8. Semicircular Canals



9. Describe what happens in the ear when temporary hearing loss occurs.

10. Describe what happens in the ear when permanent hearing loss occurs.

11. What are the two ways to lose your hearing? Which pitches are most damaging?

12. When you do have hearing loss, do you lose the high pitches or the lows first??

13. What is the recommended volume level for earbuds?

14. Set your music device to your typical listening volume. Measure and record the maximum decibels.